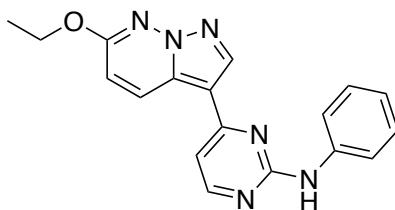


# NEK5



CAF333

**Chemical Name:** 4-(6-ethoxypyrazolo[1,5-*b*]pyridazin-3-yl)-*N*-phenylpyrimidin-2-amine

**CHEBI:** 144674

**Smile String:**

CCOC(C=C1)=NN2C1=C(C3=CC=NC(NC4=CC=CC=C4)=N3)C=N2

**Chemical Formula:** C<sub>18</sub>H<sub>16</sub>N<sub>6</sub>O

**Molecular Weight:** 332.37

**cLogP:** 2.555

**Source:** SGC-UNC

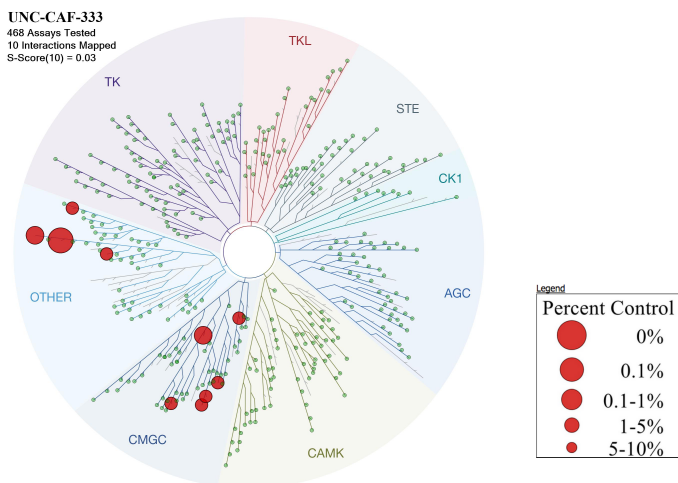
**Reference:** N/A

## Biochemical profiling

DiscoverX (403 wild-type human kinases)

**S<sub>10</sub> (1 μM):** 0.025 (10 kinase < 10% control)

**NEK5 IC<sub>50</sub>** = 59 nM



Kinase	% Control @ 1uM
NEK3	0.6
ERK8	1.2
NEK5	3.5
HIPK2	5.1
PLK3	5.1
HIPK1	5.2
CDKL5	8.3
NEK7	9
CLK4	9.8
JNK1	9.8

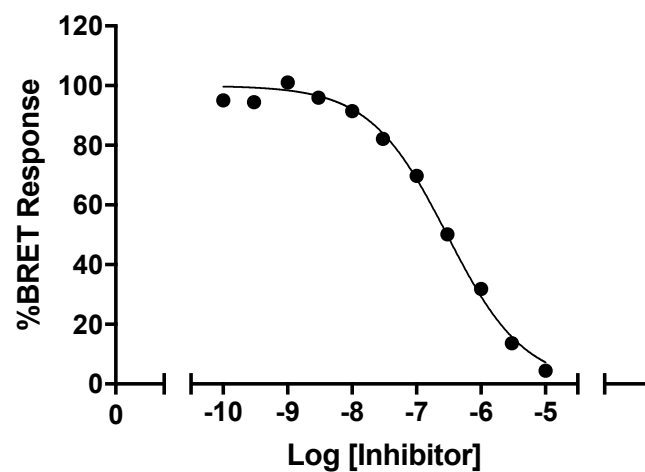
a. Treespot of DiscoverX KINOMEScan data. b. List of kinases inhibited < 10% control

## Cellular target engagement in HEK293 cells

NLuc-NEK5 (N term)

NEK5 IC<sub>50</sub> = 298 nM

CAF333



Cellular target engagement of CAF333 with NEK5

### Synthetic Route:

